

# Motorcycle tire pressure monitoring system

NOTE: Please read the instructions carefully before using this product.

## Installation and use of motorcycle tire pressure

Press and hold the power button (up key) for 5 seconds to turn on the monitor host. After the sensor is installed, the car will drive out for a circle and the data will come out without any setting.

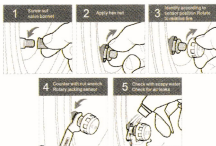
After 10 minutes at rest, it will automatically enter into the dormant standby state. When it is induced by vibration, it will automatically enter into the working state. The driving state display screen is always on, so there is no need to manually switch on and off the machine.

### Sensor battery replacement in 1-2 years

Simple, direct and easy to understand



### Sensor installation demonstration



# Contents

## 1 Product overview

- (1) FCC attention ..... 01
- (2) Product attention ..... 02
- (3) Scope of application ..... 02

## 2 Introduction of receiver

- (1) Key / Port description ..... 03
- (2) Display interface ..... 03
- (3) Alarming information ..... 04
  - 3.1 Leakage warning ..... 04
  - 3.2 Low pressure warning ..... 04
  - 3.3 High pressure warning ..... 04
  - 3.4 High temperature warning ..... 04
  - 3.5 Low power warning ..... 04
  - 3.6 No signal warning ..... 04
  - 3.7 Low power of receiver ..... 04

## 3 Function setting

- (1) Unit setting ..... 05
- (2) Temperature unit setting ..... 05
- (3) Match sensor ..... 05
- (4) Times setting ..... 06
- (5) Restore default setting ..... 06
- (6) Shortcut setting ..... 06

## 4 Parameter and warranty

- (1) Parameter of receiver ..... 07
- (2) Warranty term ..... 07

# 1. Product Overview

Esteemed customer:

Thank you for buying our Tire pressure Monitoring System (TPMS). This system makes you more safety when driving. It can real-time monitor tire pressure and temperature conditions. If detected any abnormal pressure and temperature of tires, the system will transmit real-time voice alarm and flash warning icon to remind the driven Real-time monitoring and warning can not only avoid risk of traffic accident but also make passenger safety.

In addition, this system can effectively help improve the vehicle comfortableness and driving safety, reduce vehicle wear, save fuel consumption and avoid risk of flat tire.

Please read the instructions carefully before using this product. If there is any misunderstanding, please consult distributor or phone customer service, thanks!

## (1)FCC attention

This device complies with part 15 of the FCC Rules. Operation is subject to the following two conditions:

(1) This device may not cause harmful interference, and (2) this device must accept any interference received, including interference that may cause undesired operation. Any changes or modifications not expressly approved by the party responsible for compliance could void the user's authority to operate the equipment. NOTE: This equipment has been tested and found to comply with the limits for a Class B digital device, pursuant to Part 15 of the FCC Rules. These limits are designed to provide reasonable protection against harmful interference in a residential installation. This equipment generates, uses and can radiate radio frequency energy and, if not installed and used in accordance with the instructions, may cause harmful interference to radio communications. However, there is no guarantee that interference will not occur in a particular installation. If this equipment does cause harmful interference to radio or television reception, which can be determined by turning the equipment off and on, the user is encouraged to try to correct the interference by one or more of the following measures:

- Reorient or relocate the receiving antenna.
- Increase the separation between the equipment and receiver.
- Connect the equipment into an outlet on a circuit different from that to which the receiver is connected.
- Consult the dealer or an experienced radio/TV technician for help.

The device has been evaluated to meet general RF exposure requirement. The device can be used in portable exposure condition without restriction.

## (2)Product attention

- 2.1 Operation is not suggested during driving.
- 2.2 Sensor monitors pressure and temperature of tire and signal to receive, receiver reports pressure and temperature by number and voice. If there is any abnormal pressure or temperature, flashing warning icon and voice prompt will notice driver immediately. Drivers need to check and repair the tire immediately, in order to avoid risk of accident due to tire problem.
- 2.3 Tires have natural micro leakage phenomenon. It is a normal phenomenon that pressure of tire decreases over time. Pressure decreasing don't have directly relationship with install this products.
- 2.4 It is a normal phenomenon that pressure is unstable due to thermal expansion during driving. It don't have directly relationship with install this products.

- 2.5 Incorrectly installation will affect the use of this product or make damage, experienced technician is preferred to install this product, please be careful not to damage the sensor transmitter when disassembling tires again. Valve of internal sensor is not available for repeat assembling/disassembling.
- 2.6 Please use power cable provided by factory. It is not allowed to tie receiver by power cable, as I will damage product or effect signal. And you will lose warranty.
- 2.7 Most of the high power equipment in the market are all have electromagnetic interference. In order to avoid electromagnetic interference, receiver is suggest to install 50 cm away from such kind of products.
- 2.8 There won't be notice if there is any change of products ( performance, specifications, warranty).

\* This system send signal by wireless transmission, so it may not receive signal under some certain condition like interference, error operation or improper installation. If receiver cant receive signal for 10 minutes, please drive car away from current place (maybe there is strong signal interference ) or go to authorized tire repair center to check is there any problem of sensor or battery of sensor is run out (battery life maybe shorter than normal use, as there is often abnormal condition occurs, sensor need to send signal to warn driven)

### (3) Scope of application

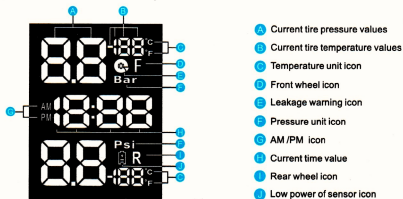
This system is suitable for vehicle with double tires and maximum pressure of tire is below 8 bar.  
\* Suggest to check and change valve regularly every year, in order to prevent leakage of tire.

## 2. Introduction of receiver

### (1)Key / Port description

- ⏪ ② select key: selecting parameter/power off key; short pressing to adjust screen lightness
- Ⓜ ③ Menu key: Long pressing to enter to system setting interface

### (2)Display interface



### (3)Alarming information

#### 3.1 Leakage warning

When any of the tire's pressure decreases within any one of a launch period exceeds 4 Psi. The buzzer sounded prompt, pressure and temperature value, icon of Warning tire and leakage icon, the LED red light will flashed at the same time. Sound warning can be stopped by pressing any key. Leakage warning will disappeared after tire stop leak.

#### 3.2 Low pressure warning

When detected pressure of any tire is lower than low pressure alarm threshold. The buzzer sounded prompt pressure and temperature value, icon of Warning tire, the LED red light will flashed at the same time. Sound warning can be stopped by pressing any key. Warning will disappeared when tire pressure 1 Psi higher than low pressure alarm threshold. Default value of low pressure alarm threshold is 22 Psi, different type of car please refer to standard pressure posted or consult with tire shop.

### 3.3 High pressure warning

When detected pressure of any tire is higher than high pressure alarm threshold . The buzzer sounded prompt, pressure and temperature value ,icon of Warning tire, the LED red light will flashed at the same time . Sound warning can be stopped by pressing any key. Warning will disappeared when tire pressure 1 Psi lower than high pressure alarm threshold . Default value of high pressure alarm threshold is 44 Psi, different type of car please refer to standard pressure posted or consult with tire shop.

### 3.4 High temperature warning

When detected temperature of any tire is higher than high temperature alarm threshold . The buzzer sounded prompt, pressure and temperature value ,icon of Warning tire, the LED red light will flashed at the same time . Sound warning can be stopped by pressing any key. Warning will disappeared when tire temperature 1 °C lower than high temperature alarm threshold . Default value of high temperature alarm threshold is 70 °C .

### 3.5 Low power warning

When voltage of sensor's battery is lower than 2.3V.The buzzer sounded prompt, pressure and temperature value, icon of Warning tire and icon of low power, the LED red light will flashed at the same time . Sound warning can be stopped by pressing any key. Warning will disappeared after problem solved.

### 3.6 No signal warning

When receiver didn' t receive any data from sensor. The buzzer sounded prompt, icon of Warning tire, the LED red light will flashed at the same time. Sound warning can be stopped by pressing any key . Warning will disappeared after problem solved . Reason of No signal of sensor include but not limit to follow : receiver is too close to interference, sensor lost, sensor damage, low power of sensor, no pressure of tire.

### 3.7 Low power of receiver

When voltage of receiver's battery (lithium battery 480mAh)is lower than 10%. Icon of low power will flashed . The receiver automatically turn off after 30 minutes ,and didn't receive any data, please use car charge(5V 1.5A) charging in time, charging period does not affect normal use . When the power is plugged in, the LED blue light will flash continuously. If the LED blue light is on, it means it is fully charged

## 3.Function setting

(Limited by length,the pictures for you reference only.  
Characters of user interface in order to prevail in kind)

User can set parameter himself according to vehicle's actual demand, system default factory settings if user don't have any settings. in addition, user can also restore factory settings functional to recovery inappropriate settings. pressing "menu"key 3 seconds into system setting. all interface operation is 15 seconds expect " match sensor" and "times settings" are 90 seconds.system will automatically exit to standby interface if there is no any operation in limited time. Data can't be saved if not pressing "menu"key.

#### (1)Unit setting (Default is Psi,°C)

Pressing "menu"key 3seconds in standby interface inter to unit setting interface.first enter to pressure unit switch interface. short pressing "select"key to switch the unit between Psi->Bar.short pressing "menu"key to enter to temperature unit switch interface, short pressing "select"key to switch the temperature unit between °C->°F. Short pressing "menu"key to enter to pressure threshold setting Interface.



## (2) Threshold setting (Default is low pressure 22 Psi/high pressure 44 Psi, high temperature 70 °C)

Pressing "menu" key 3 seconds enter to system setting, then short pressing "menu" key 2 times to enter to pressure threshold setting interface. First option is "Front tire low pressure setting", short pressing "menu" key to switch among "front tire low pressure" -> "front tire high pressure" -> "rear tire low pressure" -> "rear tire high pressure" and pressing the "select" key to adjust the data. after finishing, short pressing "menu" key save the setting and enter to next setting option, in the last option "rear tire high pressure", short pressing "menu" to enter to temperature threshold setting interface. Then short pressing "select" key to adjust data. after finishing short pressing "menu" key to enter to next option, sensor matching setting interface.



## (3) match sensor (gas charging/venting for match)

Pressing "menu" key 3 seconds in standby interface enter to unit setting interface, then short pressing "menu" key 7 times to enter learn ID interface, it shows IDs of double tires. Short pressing "select" key to learn Front tire ID operation, then pressing "menu" key to learn Rear tire ID operation. When tire is selected, display only shows its "ID" and flashes icon of corresponded tire. There will be "didi" notice and display new "ID" number in receiver after active sensors ID (internal sensor active by charging/vent tire, external sensor active by repeat in stallion). When double sensors are matched, short pressing "menu" key to save and go to "times setting" interface.



## (4) Times settings (AM /PM settings, hours settings, minutes settings)

Pressing "menu" key 3 seconds in standby interface enter to unit setting interface, then short pressing "menu" key 8 times to enter "times settings" interface. Display the current time, short press "select" key to enter the time setting sub-page, the default is "AM/PM" setting interface, by short pressing "Menu" to switch between "AM/PM" -> "Hour Value" -> "Minute Ten-digit Value" -> "Minute One-digit Value". After selecting the subitem of the desired setting, press the "Select" Key to adjust the specific value. In the last "Minute One-digit Value" setting interface, press "Menu" to jump directly to the "Default Settings" interface.



## (5) Default setting

Pressing "menu" key 3 seconds in standby interface enter to unit setting interface, then short pressing "menu" key 9 times to enter default setting interface, "dF" is appeared in front tire. Long pressing "select" key 2 seconds to restore default. Default is successful when "dF" is appeared in rear tire, Short press "menu" key to give up restore and go to standby mode.

## (6) shortcut setting

- \* Long pressing "select" key 5 seconds in the standby mode to enter sleep mode. Receiver restart to work by pressing any key.
- \* Long pressing "select" key + "Menu" Key for 3 seconds in the standby mode to enter the "Time Setting" operation interface directly.

## 4. Parameter and warranty

### (1) Parameter of receiver

Operating Voltage: 3.7-5 V

Operating temperature: -20°C—75°C

Bright operating current: < 7 mA

RF Transmission frequency: 433.92 MHz±50 KHz

Display: LCD color screen

Storage temperature: -30°C - 80°C

RF Signal reception sensitivity: -90 dbm

### (2) Warranty

Warranty is 1 year counted from buying date ( not include periodically consumable part ). if the product failure under normal operation, We will provide free replacement or repair during the period of warranty. We reserves the right to change new products or other equivalent product.

Exception to warranty:

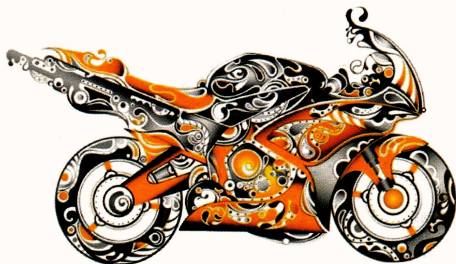
- 1, Don't follow user manual to operate product
- 2, Product damaged because of accident, neglect, abuse, misuse
- 3, Repair without authorization
- 4, Damaged due to transportation
- 5, Other damage not because of design, technical, manufacturing and quality problem

---

All failure products should be sent to us or our authorized repair center, attached with detail description of defect and show original purchase invoice. Warranty card is effective only in purchased country.

This warranty is restricted to above conditions, We will not responsible for the damage related to our products (like tire explosion). This warranty provides you specific legal rights, but may also varied different rights for other countries.

The sales package may offer products with color on color or packaging shown in this manual are different. Picture only for reference, technical specifications subject to change without notice. Parts supply may vary from market to market, please consult your local dealer.



Customer name		Telephone	
Address			
Shop name			
Model	Internal	External	Item
Warranty	One year	(Signature by shop)	
	Two years		
The date of purchase _____			

DE

## Motor-TPMS Bedienungsanleitung

Einführung zum Empfänger

Auswahltaste: Parameter auswählen/Ausschalttaste;  
kurzer Druck zum Einstellen der Helligkeit.

Menütaste: Langer Druck zum Aufrufen der Systemeinstellungs-  
oberfläche.

Produkthinweise

1. Der Betrieb wird während der Fahrt nicht empfohlen.
2. Der Sensor überwacht Druck und Temperatur des Reifens und gibt ein Signal an den Empfänger, der Druck und Temperatur per Zahl und Sprachansage meldet. Bei anormalem Druck oder anormaler Temperatur wird der Fahrer sofort durch ein blinkendes Warnsymbol und eine Sprachansage darauf aufmerksam gemacht. Fahrer müssen den Reifen sofort überprüfen und reparieren, um das Risiko eines Unfalls aufgrund von Reifenproblemen zu vermeiden.
3. Reifen weisen ein natürliches Mikroleckphänomen auf. Es ist ein normales Phänomen, dass der Reifendruck mit der Zeit abnimmt. Ein Druckabfall hat keinen direkten Zusammenhang mit der Installation dieser Produkte.
4. Es ist ein normales Phänomen, dass der Druck aufgrund der Wärmeausdehnung während der Fahrt instabil ist. Dies hat keinen direkten Zusammenhang mit der Installation dieser Produkte.
5. Eine falsche Installation beeinträchtigt die Verwendung dieses Produkts oder führt zu Schäden. Für die Installation dieses Produkts wird ein erfahrener Techniker empfohlen. Bitte achten Sie darauf, den Sensorsender nicht zu beschädigen, wenn Sie die Reifen wieder demontieren. Das Ventil des internen Sensors ist für eine wiederholte Montage/Demontage nicht verfügbar.

Service E-Mail: [wlp@szwollip.com](mailto:wlp@szwollip.com)

